

## UC-1510

## FEATURES

Controls temperature within one degree of setpoint

Produces up to 50 pounds of octagonal-shaped ice per day; stores 25 pounds at a time

Produces ice in temperatures up to 100 degrees Fahrenheit

Locks in cold air to ensure freshness with magnetic door seals

Set the two, four, and eight-hour delay to temporarily stop ice production, or pause ice production at the same time every day with auto-delay

Holds built-in ice scoop neatly in the door so it is there when you need it

Accessory stainless-steel panel with pro handle matches perfectly with other outdoor Sub-Zero and Wolf products.

## ACCESSORIES

Cleaner For Undercounter Ice Maker

Filter For Undercounter Ice Maker

Sanitizer For Undercounter Ice Maker

Stainless Steel Kickplate

15" Outdoor Stainless Steel Door Panel with Pro Handle

Accessories are available through an authorized dealer.  
For local dealer information, visit [subzero-wolf.com/locator](https://subzero-wolf.com/locator).



## PRODUCT DETAILS

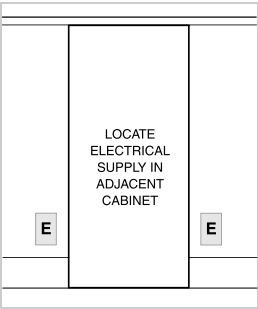
## FREEZER

- LED lighting
- Built-in ice scoop

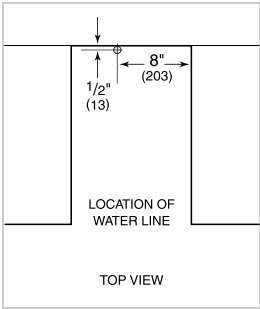
PRODUCT SPECIFICATIONS

|                    |   |
|--------------------|---|
| Model              | UC-15IO   |
| Dimensions         | 14 3/4"W x 33 5/8"H x 23"D                            |
| Weight             | 123 lbs   |
| Electrical Supply  | 115 VAC, 60 Hz  |
| Electrical Service | 15 amp dedicated circuit                              |
| Plumbing Supply    | 1/4" OD copper, braided stainless steel or PEX tubing |
| Plumbing Pressure  | 20–80 psi   |
| Receptacle         | 3-prong grounding-type, GFCI                          |

ELECTRICAL



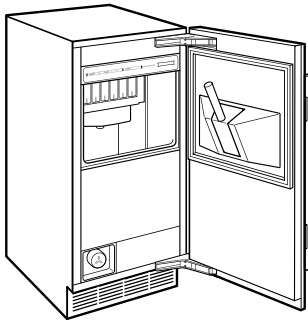
PLUMBING



**ICE MAKER DRAIN** Ice maker models can be ordered with or without a drain pump. Models without a pump will drain water by gravity. A drain must be provided for all models.

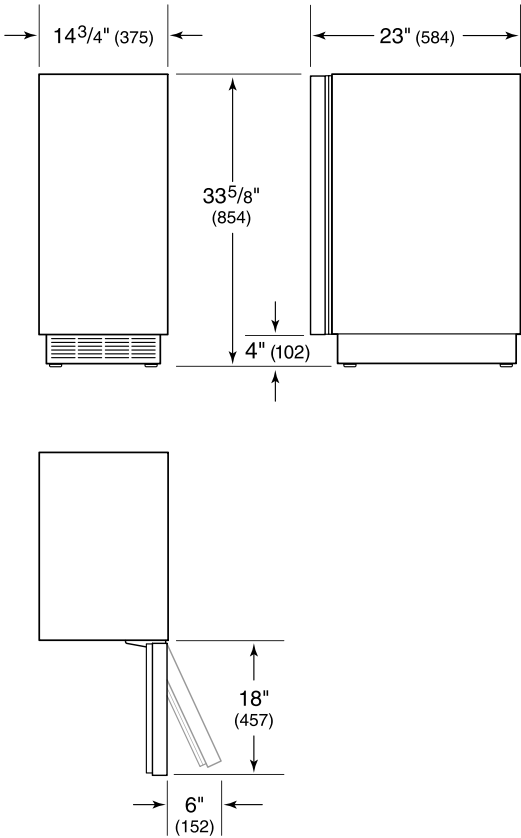
**NOTE:** Dimensions in parenthesis are in millimeters unless otherwise specified

INTERIOR VIEW

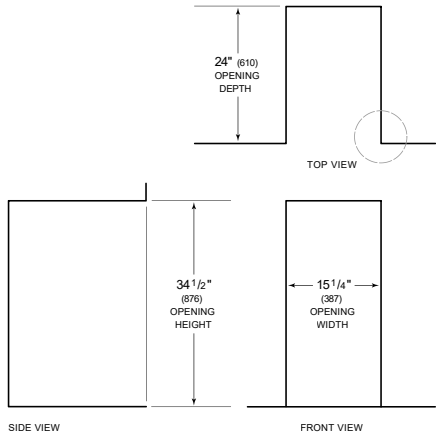


This illustration is intended for interior reference only and may not represent the exterior of the model being specified.

DIMENSIONS



STANDARD INSTALLATION



**NOTE:** 3 1/2" (89) finished returns will be visible and should be finished to match cabin

