

DW2450WS**FEATURES**

Adjusts the amount of salt used per wash to the hardness level of your water

Adapts easily to differently shaped dishes and glasses with a height-adjustable middle rack and fold-down tines

Removes food and grease with three powerful spray arms and custom wash and dry options for different soil levels

Filters food efficiently through fine mesh for cleaner water throughout every cycle

Dries every type of dish, utensil, and pan thoroughly with a hot rinse and fan-assist

Operates in near silence that never interrupts

Opt for a stainless-steel panel for a timeless, sophisticated look that coordinates with classic Wolf and Sub-Zero styles

Or, choose custom panels to integrate into any kitchen design

Provides better visibility with interior LED lights

Maintains clean lines with sleek control panel and floor status light

Marvel at the durability of the stainless-steel exterior and interior, built for decades of use

Height-adjustable middle rack and fold-down tines adjust to any size or combination of dishes

LED-lit interior for better interior visibility

Accepts cabinet panels for a custom look or stainless panels and handles to match Sub-Zero and Wolf products

Easy-to-use touch controls and display are hidden to maintain clean lines and a status floor light indicates cycle status

Near-silent operation never interrupts the conversation

Custom wash and dry options and three separate spray arms to ensure optimal cleaning performance

Cove's leak protection system offers peace of mind in the rare event of a leak. A conductivity sensor in the base of the unit will automatically stop a cycle in progress if it detects a leak

ACCESSORIES

4" Stainless Kickplate - 24" Opening

4" Stainless Kickplate - 60cm Opening

Pro Handle Kit

Tubular Handle Kit

24" Stainless Steel Door Panel Kits

60cm Stainless Steel Door Panel Kits

Accessories are available through an authorized dealer.
For local dealer information, visit subzero-wolf.com/locator.

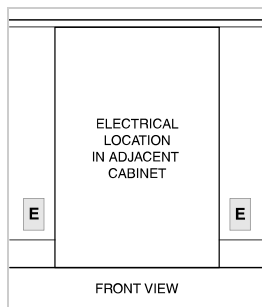
**HANDLE ACCESSORIES****PRO****TUBULAR****PRODUCT DETAILS****DISHWASHER**

- 4 LED lights (2 sides; 2 top)
- 43 spray jets across 3 spray arms
- Four-stage, fine mesh filter
- Adjustable stemware rail
- Adjustable cup shelf
- Height-adjustable middle rack
- Easy-glide bottom rack
- Upper silverware rack
- One large utensil basket
- Water softener

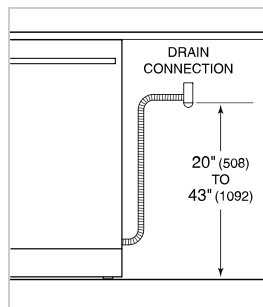
PRODUCT SPECIFICATIONS

Model	DW2450WS
Dimensions	23 5/8"W x 34 1/2"H x 23 1/4"D
Door Clearance	26 3/4"
Sound Level	41 dBA (Model and cycle/option dependent)
Electrical Supply	115 VAC, 60 Hz
Electrical Service	15 amp dedicated circuit
Receptacle	3-prong grounding-type
Cord Length	6'
Water Connection	5' braided tubing with 3/8" female compression fitting
Drain Connection	5' (1.5 m) corrugated tubing
Plumbing Pressure	30–140 psi

ELECTRICAL



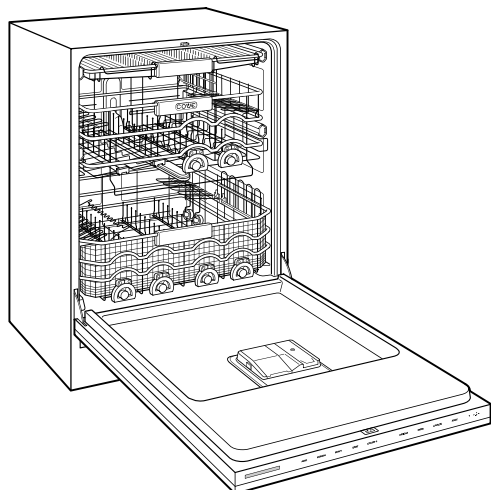
PLUMBING



COVE OPENING WIDTH Cove dishwashers accommodate varying opening widths. A 23 5/8" (60 cm) width provides minimum reveals and is ideal for new construction. A 24" width is also common; however, reveals for a 24" opening will be larger than the reveals for a 23 5/8" opening unless the panel width is adjusted accordingly. 24" and 60 cm stainless steel panels are available and must be specified accordingly.

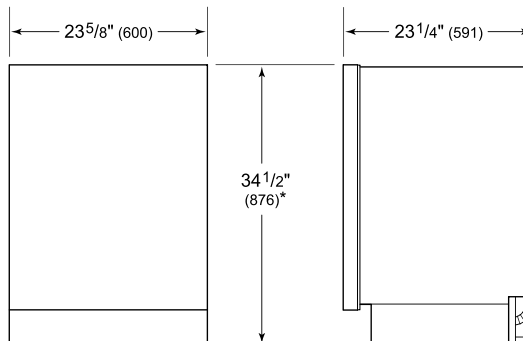
PANEL SPECIFICATIONS For complete panels specifications including width/height, weight requirements and thickness requirements visit subzero-wolf.com/reveal.

INTERIOR VIEW

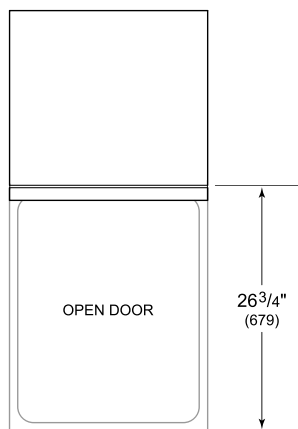


This illustration is intended for interior reference only and may not represent the exterior of the model being specified.

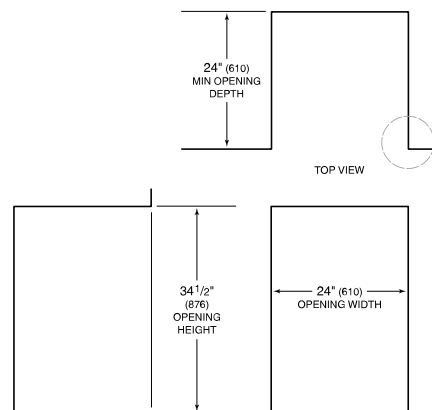
DIMENSIONS



*33 3/4" (857) MIN TO 34 3/4" (883) MAX



24" INSTALLATION



NOTE: 3/2" (89) finished returns will be visible and should be finished to match cabinetry.

