

UC - 1510

FEATURES

- Rigorously tested to ensure decades of use
- Exceptional support from Madison, WI-based Customer Care team
- Approved for outdoor use
- Produces up to 50 lbs. of ice per day
- Produces ice in temperatures up to 100° F
- Two, four and eight-hour delay feature
- Clean and change filter indicator light
- Water-filtration system reduces contaminants, chlorine taste and odor
- Built-in ice scoop

ACCESSORIES

- 15" Stainless Door Panel with Pro Handle
- Cleaner For Undercounter Ice Maker
- Filter For Undercounter Ice Maker
- Sanitizer For Undercounter Ice Maker
- Stainless Steel Kickplate

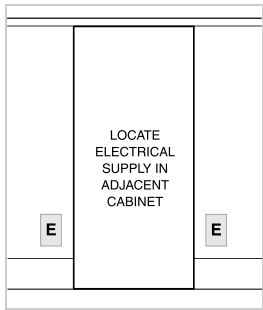
Accessories are available through an authorized dealer.
For local dealer information, visit subzero-wolf.com/locator.



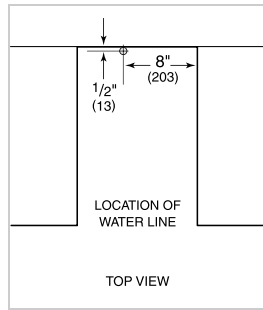
PRODUCT SPECIFICATIONS

Model	UC-15IO
Dimensions	14 3/4"W x 33 5/8"H x 23"D
Door Clearance	18"
Weight	117 lbs
Electrical Supply	115 VAC, 60 Hz
Electrical Service	15 amp dedicated circuit
Receptacle	3-prong grounding-type, GFCI

ELECTRICAL

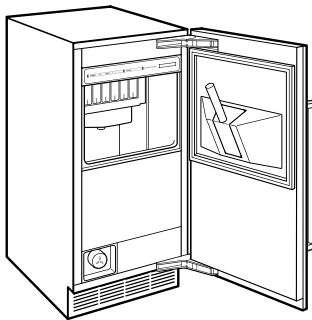


PLUMBING



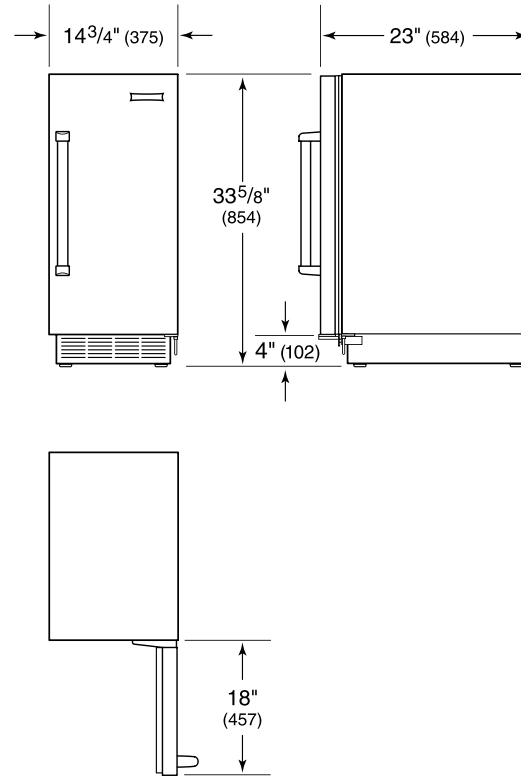
NOTE: Dimensions in parenthesis are in millimeters unless otherwise specified

INTERIOR VIEW

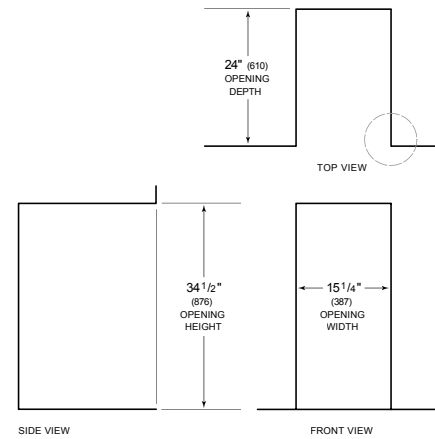


This illustration is intended for interior reference only and may not represent the exterior of the model being specified.

DIMENSIONS



STANDARD INSTALLATION



NOTE: 3 1/2" (89) finished returns will be visible and should be finished to match cabin

