

**UC - 15IP****FEATURES**

- \_\_\_\_\_ Rigorously tested to ensure decades of use
- \_\_\_\_\_ Exceptional support from Madison, WI-based Customer Care team
- \_\_\_\_\_ Produces up to 50 lbs. of ice per day
- \_\_\_\_\_ Produces ice in temperatures up to 100° F
- \_\_\_\_\_ Two, four and eight-hour delay feature
- \_\_\_\_\_ Clean and change filter indicator light
- \_\_\_\_\_ Water-filtration system reduces contaminants, chlorine taste and odor
- \_\_\_\_\_ Built-in ice scoop

**ACCESSORIES**

- \_\_\_\_\_ 15" Stainless Door Panel with Pro Handle
- \_\_\_\_\_ 15" Stainless Door Panel with Tubular Handle
- \_\_\_\_\_ 15" to 18" Filler
- \_\_\_\_\_ 18" Stainless Door Panel with Tubular Handle
- \_\_\_\_\_ Cleaner For Undercounter Ice Maker
- \_\_\_\_\_ Ice Machine 18" Stainless Door Panel with Pro Handle
- \_\_\_\_\_ Sanitizer For Undercounter Ice Maker
- \_\_\_\_\_ Stainless Steel Kickplate
- \_\_\_\_\_ Stainless Steel Pro Handles
- \_\_\_\_\_ Stainless Steel Tubular Handles

Accessories are available through an authorized dealer.  
For local dealer information, visit [subzero-wolf.com/locator](https://subzero-wolf.com/locator).

**HANDLE ACCESSORIES**

PRO



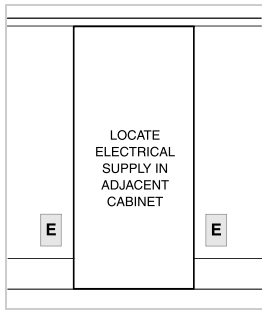
TUBULAR



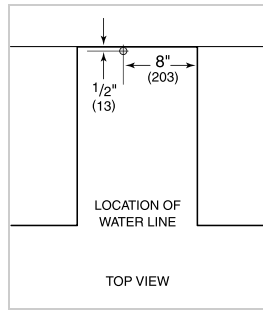
**PRODUCT SPECIFICATIONS**

Model	UC-15IP
Dimensions	14 3/4"W x 33 5/8"H x 23"D
Door Clearance	18"
Weight	117 lbs
Electrical Supply	115 VAC, 60 Hz
Electrical Service	15 amp dedicated circuit
Receptacle	3-prong grounding-type

**ELECTRICAL**

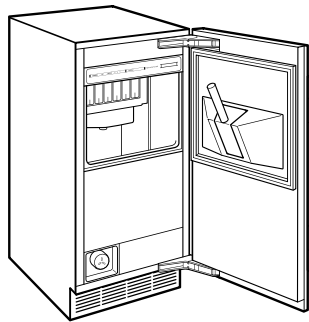


**PLUMBING**



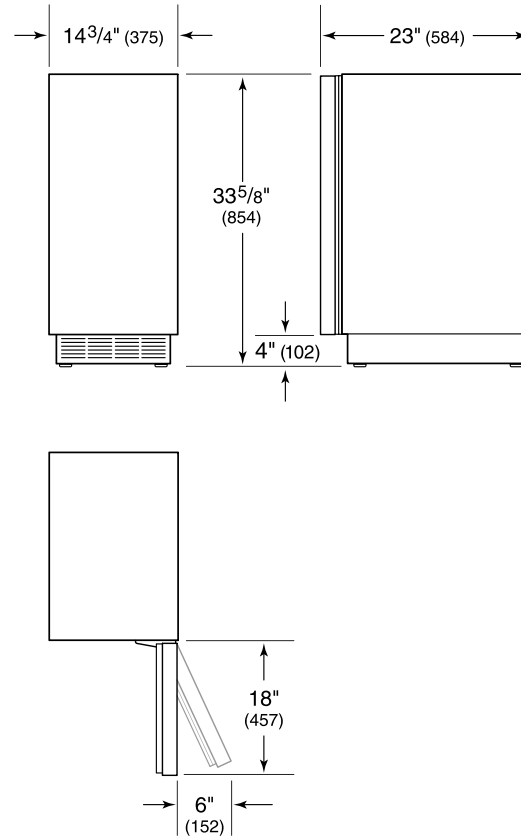
NOTE: Dimensions in parenthesis are in millimeters unless otherwise specified

**INTERIOR VIEW**

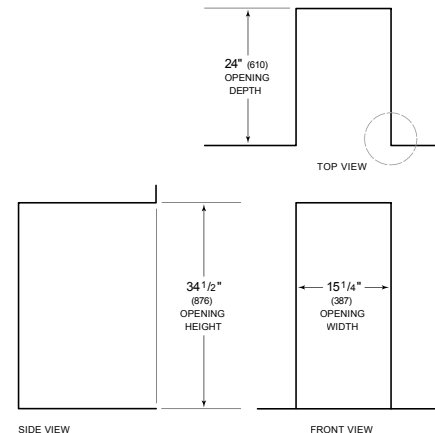


This illustration is intended for interior reference only and may not represent the exterior of the model being specified.

**DIMENSIONS**



**STANDARD INSTALLATION**



NOTE: 3 1/2" (89) finished returns will be visible and should be finished to match cabin

