

UC-15IPO

FEATURES

- Approved for outdoor use
- Produces up to 50 lbs. of ice per day
- Clean and change filter indicator light
- Water-filtration system reduces contaminants, chlorine taste and odor
- Built-in ice scoop
- Two, four and eight-hour delay feature
- Easy-access control panel
- Produces ice in temperatures up to 100° F
- Rigorously tested in our U.S. manufacturing facilities to ensure decades of use
- Exceptional 24/7 support from Madison, WI-based Customer Care team

ACCESSORIES

- 15" Stainless Door Panel with Pro Handle
- Cleaner For Undercounter Ice Maker
- Sanitizer For Undercounter Ice Maker
- Stainless Steel Kickplate

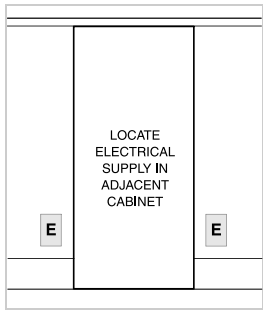
Accessories are available through an authorized dealer.
For local dealer information, visit subzero-wolf.com/locator.



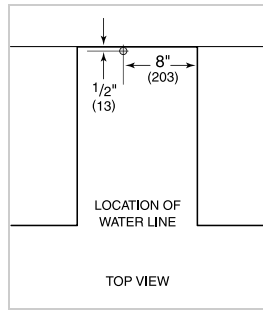
PRODUCT SPECIFICATIONS

Model	UC-15IPO
Dimensions	14 3/4"W x 33 5/8"H x 23"D
Door Clearance	18"
Weight	117 lbs
Electrical Supply	115 VAC, 60 Hz
Electrical Service	15 amp dedicated circuit
Receptacle	3-prong grounding-type, GFCI

ELECTRICAL



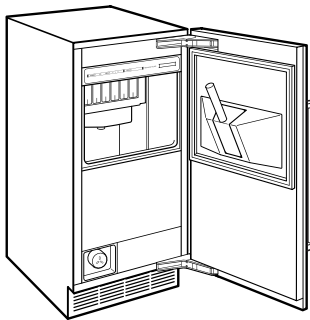
PLUMBING



ICE MACHINE DRAIN Ice machine models can be ordered with or without a drain pump. Models without a pump will drain water by gravity. A drain must be provided for all models.

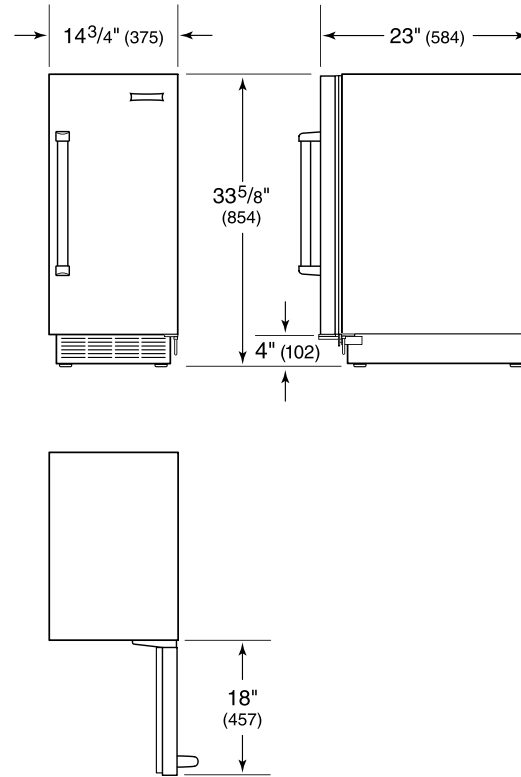
NOTE: Dimensions in parenthesis are in millimeters unless otherwise specified

INTERIOR VIEW

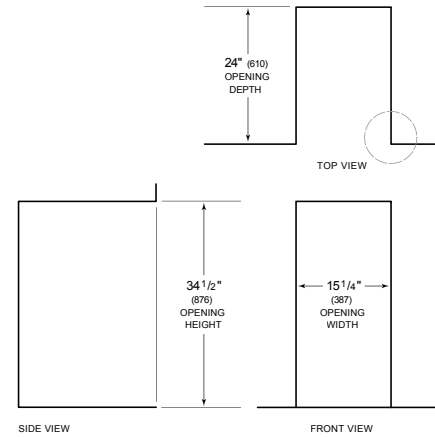


This illustration is intended for interior reference only and may not represent the exterior of the model being specified.

DIMENSIONS



STANDARD INSTALLATION



NOTE: 3 1/2" (89) finished returns will be visible and should be finished to match cabin

