

**VS24**

**FEATURES**

- \_\_\_\_\_ Rigorously tested for decades of use
- \_\_\_\_\_ Exceptional support from our Customer Care team in Madison
- \_\_\_\_\_ Chamber vacuum seal liquids and fragile foods
- \_\_\_\_\_ Pair with Wolf ovens or steamer module for easy meal prep
- \_\_\_\_\_ Stainless, black glass, or custom panel options in 24" or 30" widths
- \_\_\_\_\_ Seal wine and other rigid containers with included accessory

**ACCESSORIES**

- \_\_\_\_\_ 24" Black Glass Front Panel
- \_\_\_\_\_ 24" Stainless Front Panel
- \_\_\_\_\_ 30" Black Glass Front Panel
- \_\_\_\_\_ 30" Stainless Front Panel
- \_\_\_\_\_ Integrated Front Panel
- \_\_\_\_\_ Large Bags - 9 1/2" x 13 5/8"
- \_\_\_\_\_ Small Bags - 7 1/4" x 10 7/8"
- \_\_\_\_\_ Wine Stoppers

Accessories available through an authorized dealer.  
 For local dealer information, visit [subzero-wolf.com/locator](http://subzero-wolf.com/locator).



**FRONT PANEL OPTIONS**



24" DRAWER FRONT STAINLESS PANEL



30" DRAWER FRONT STAINLESS PANEL



24" DRAWER FRONT BLACK PANEL



30" DRAWER FRONT BLACK PANEL

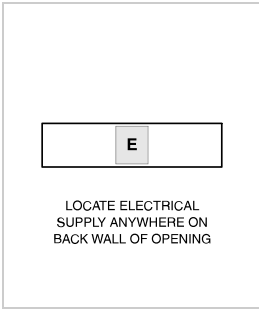


CUSTOM PANEL  
*Integrated Front Panel Kit Required*

**PRODUCT SPECIFICATIONS**

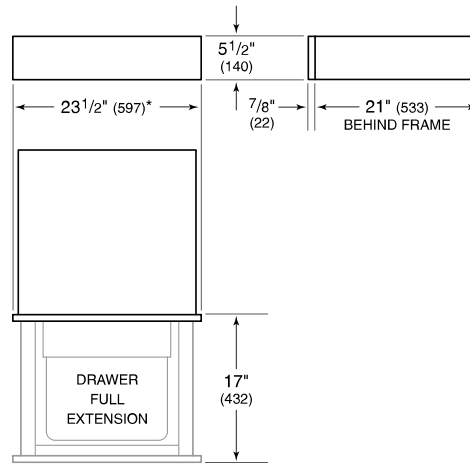
Model	VS24
Capacity	0.25 cu. ft.
Electrical Supply	3-prong grounding-type
Electrical Service	10 amp dedicated circuit
Power Cord Length	3 Feet
Receptacle	3-prong grounding-type

**ELECTRICAL**



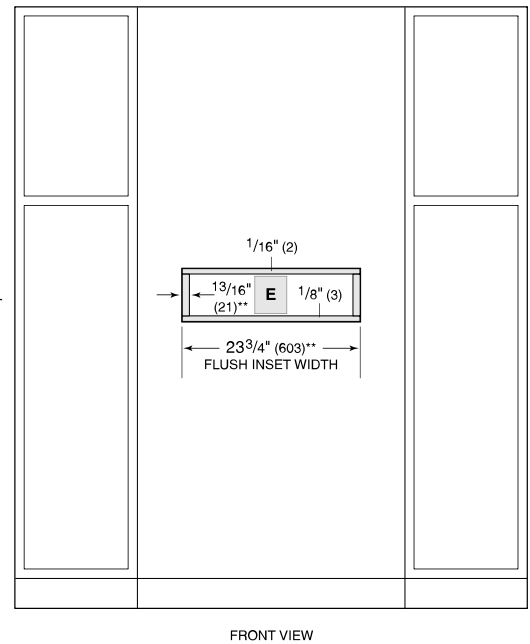
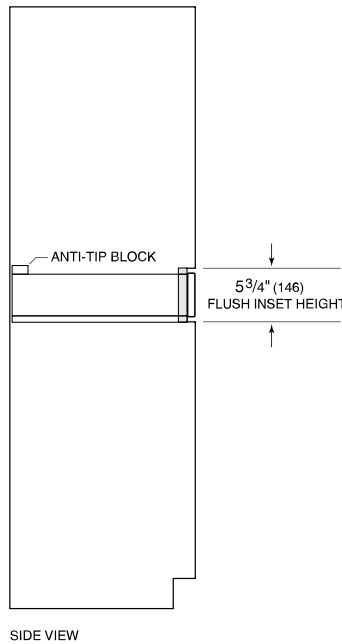
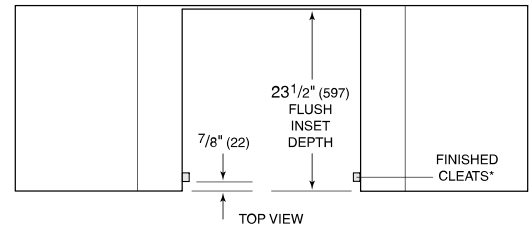
**NOTE:** Dimensions in parenthesis are in millimeters unless otherwise specified

**DIMENSIONS**



\*29 7/8" (759) width for 30" panel.

**FLUSH INSTALLATION**



\*Will be visible and should be finished to match cabinetry.

\*\*30 1/8" (765) width and 4" (102) cleat dimension for 30" panel.

**NOTE:** Flush inset width and height dimensions provide minimum reveals.