

VS24

FEATURES

- _____ Rigorously tested for decades of use
- _____ Exceptional support from our Customer Care team in Madison
- _____ Chamber vacuum seal liquids and fragile foods
- _____ Pair with Wolf ovens or steamer module for easy meal prep
- _____ Stainless, black glass, or custom panel options in 24" or 30" widths
- _____ Seal wine and other rigid containers with included accessory

ACCESSORIES

- _____ 24" Black Glass Front Panel
- _____ 24" Stainless Front Panel
- _____ 30" Black Glass Front Panel
- _____ 30" Stainless Front Panel
- _____ Integrated Front Panel
- _____ Large Bags - 9 1/2" x 13 5/8"
- _____ Small Bags - 7 1/4" x 10 3/8"
- _____ Wine Stoppers

Accessories available through an authorized dealer.
 For local dealer information, visit subzero-wolf.com/locator.



FRONT PANEL OPTIONS



24" DRAWER FRONT STAINLESS PANEL



30" DRAWER FRONT STAINLESS PANEL



24" DRAWER FRONT BLACK PANEL



30" DRAWER FRONT BLACK PANEL



CUSTOM PANEL
Integrated Front Panel Kit Required

PRODUCT SPECIFICATIONS

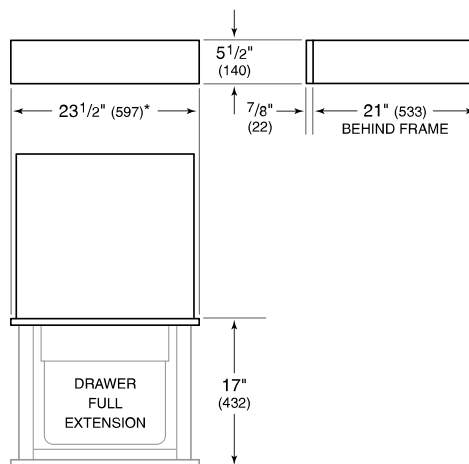
Model	VS24
Capacity	0.25 cu. ft.
Electrical Supply	3-prong grounding-type
Electrical Service	10 amp dedicated circuit
Power Cord Length	3 Feet
Receptacle	3-prong grounding-type

ELECTRICAL



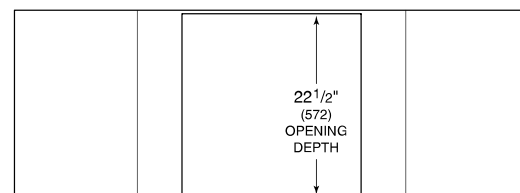
NOTE: Dimensions in parenthesis are in millimeters unless otherwise specified

DIMENSIONS

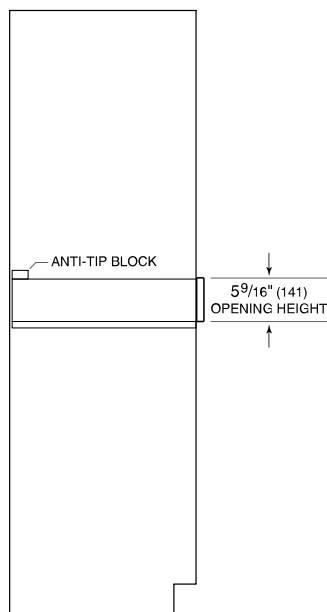


*29 7/8" (759) width for 30" panel.

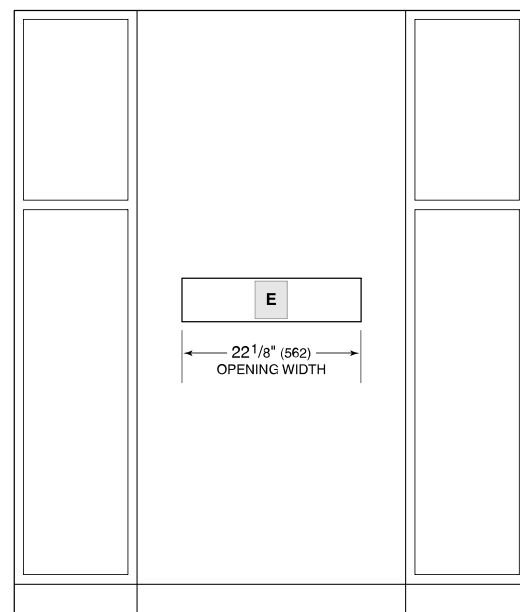
STANDARD INSTALLATION



TOP VIEW



SIDE VIEW



FRONT VIEW