

PL342212

FEATURES

- Heavy-duty stainless steel construction
- Infinite speed blower control
- Recessed controls for sleeker look
- Heat sentry for safety
- Bright halogen lighting
- Blower required (internal, in-line or remote blowers available)
- Transition with backdraft minimizes backward flow of cold air
- Rigorously tested for decades of use
- Exceptional support from our Customer Care team in Madison

ACCESSORIES

- 1100 CFM Inline Blower
- 1200 CFM Internal Blower
- 1200 CFM Remote Blower
- 1500 CFM Remote Blower
- Make-Up Air Damper

Accessories available through an authorized dealer.
For local dealer information, visit subzero-wolf.com/locator.



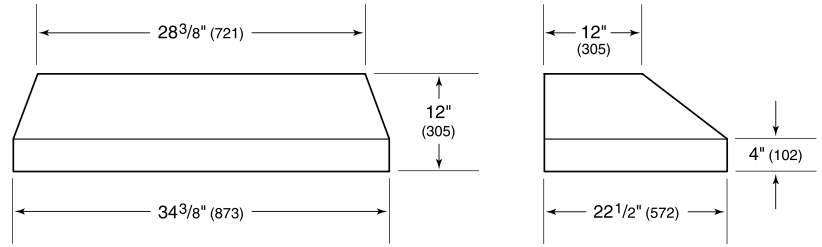
BLOWER OPTIONS

- 300 CFM Internal
- 450 CFM Internal
- 600 CFM Internal
- 900 CFM Internal
- 1200 CFM Internal
- 600 CFM Inline
- 1100 CFM Inline
- 600 CFM Remote
- 900 CFM Remote
- 1200 CFM Remote
- 1500 CFM Remote

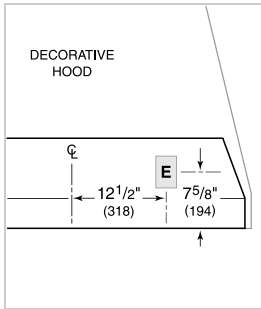
PRODUCT SPECIFICATIONS

Model	PL342212
Dimensions	34 3/8"W x 12"H x 22 1/2"D
Weight	45 lbs
Electrical Supply	110/120 VAC, 60 Hz
Electrical Service	15 amp dedicated circuit
Discharge Location	Vertical
Discharge Dimensions	10" Round
Bottom of Hood to Countertop	30" to 36"

DIMENSIONS



ELECTRICAL



NOTE: Dimensions in parenthesis are in millimeters unless otherwise specified